



House - Semi-Detached

10 DRYHILL
ROAD,
BELVEDERE,
DA17 5PA

Per Month

£2,000

FEATURES

- Four bedrooms
- Open-plan living/dining area
- Newly refurbished throughout
- New laminate flooring in key areas
- Garage
- Private rear garden
- Kitchen under refurb
- Family bathroom



BEXLEY HOMES

4 Bedroom House – Semi-Detached located in Belvedere

Stunning Refurbished 4-Bedroom Family Home with Garden & Garage – DA17

This beautifully refurbished four-bedroom home offers stylish, modern living in a well-connected and family-friendly location. Finished to a high standard throughout.

The ground floor features a bright and spacious open-plan living and dining area, perfect for both everyday living and entertaining. The home has been thoughtfully upgraded with brand-new laminate flooring throughout the hallway, living/dining space, and all four bedrooms, creating a cohesive and contemporary feel.

Upstairs, the staircase and landing will be fitted with new carpets, adding comfort and warmth to the home. The property comprises four well-proportioned bedrooms, offering flexibility for family life, home working, or guest accommodation.

Call us on

01322 948500

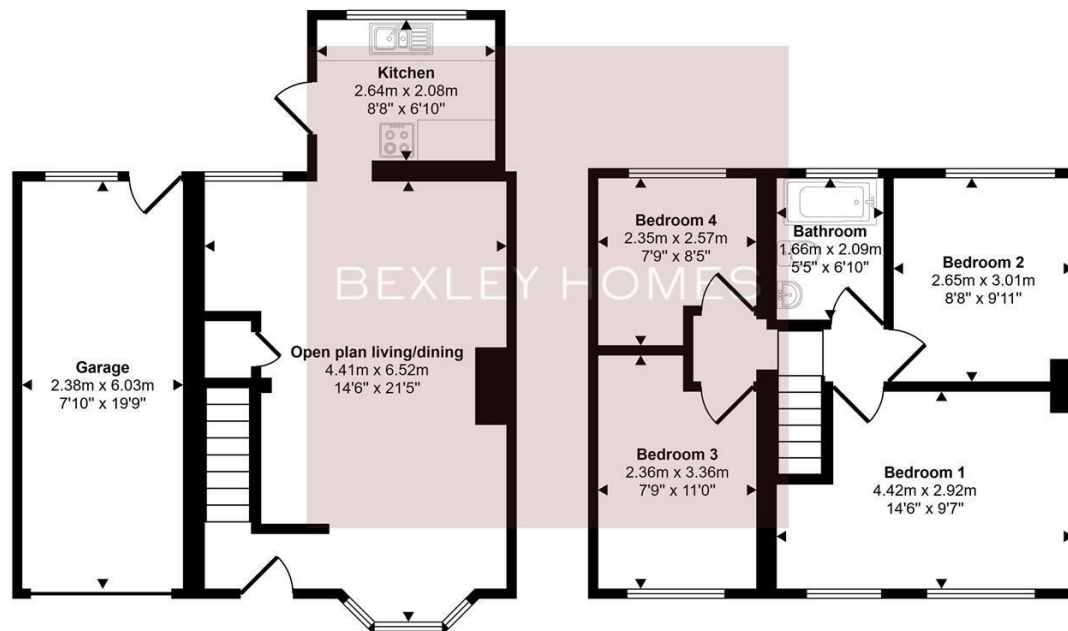
Belvedere@bexleyhomes.co.uk

www.bexleyhomes.co.uk

Council Tax Band

E

Approx Gross Internal Area
93 sq m / 1004 sq ft



This floorplan is only for illustrative purposes and is not to scale. Measurements of rooms, doors, windows, and any items are approximate and no responsibility is taken for any error, omission or mis-statement. Icons of items such as bathroom suites are representations only and may not look like the real items. Made with Made Snappy 360.

Energy Efficiency Rating		Current	Potential
<i>Very energy efficient - lower running costs</i>			
(92 plus)	A		
(81-91)	B		
(69-80)	C		
(55-68)	D		
(39-54)	E	65	
(21-38)	F		
(1-20)	G		
<i>Not energy efficient - higher running costs</i>			
England & Wales		EU Directive 2002/91/EC	

Agents Note: Whilst every care has been taken to prepare these particulars, they are for guidance purposes only. All measurements are approximate and are for general guidance purposes only and whilst every care has been taken to ensure their accuracy, they should not be relied upon and potential buyers are advised to recheck the measurements.

BEXLEY HOMES